

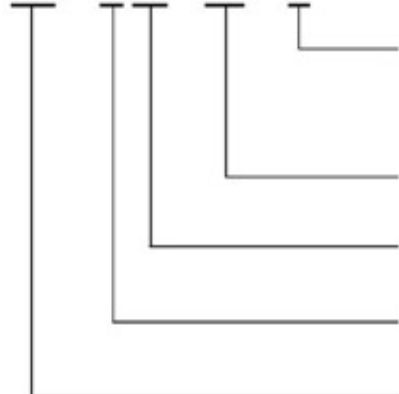
Cam Operated Directional Valves

凸輪式換向閥



型號說明/HOW TO ORDER

DC - G 02 - B2 - R



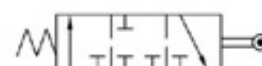
壓輪方向 ROLLER POSITION
標準型 S—
R—
Y—

滑輪型式 SPOOL TYPE (SEEPAGE2)

通徑 PORT SIZE
02 : 1/4"

安裝型式 MOUNTING
板式型式 G : SUBPLATE MOUNTED

系列編號 : Series Number



規格說明/SPECIFICATIONS

型式 MODEL	最大壓力 MAX. PRESSURE kgf/cm ²	最大容許背壓 MAX. BACK PRESSURE kgf/cm ²	最大流量 MAX FLOW LPM	重量 WEIGHT kg
DC-G02-B2-10	210	70	30	1.3

凸輪位置與流量方向說明/SPECIFICATIONS

型式 MODEL	符號 SYMBOL	滾輪位置 and 流量 ROLLER POSITION VS. FLOW (mm)
DC-G02-2B-10		

附件/ATTACHMENT

型式 MODEL	安裝螺絲 SOC HOL CAP SCREW	鎖緊扭力 TIGHTENING TORQUE
DC-G02	M5 × 45L.....4pcs	50-70 kgf/cm ²

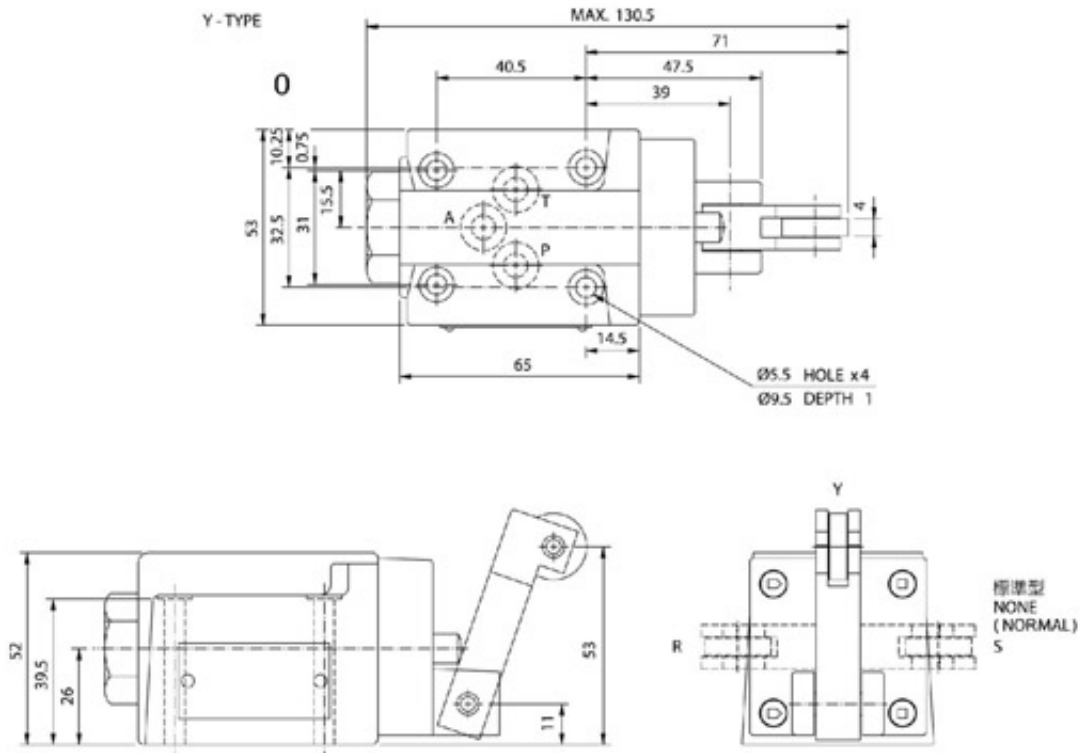
Cam Operated Directional Valves

凸輪式換向閥



安裝尺寸/INSTALLATION DIMENSIONS

■ DC-G02-2B-1

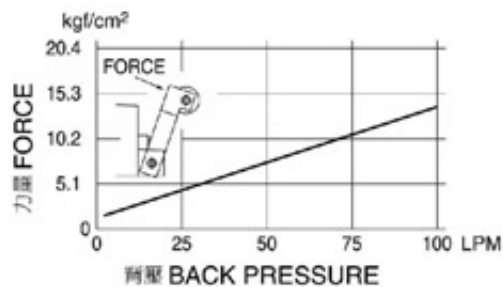


測試條件/PERFORMANCE CURVES

測試油黏度：TEST FLUID VISCOSITY：35 cSt

測試油溫度：TEST TEMPERATURE：50°C

■ DC-G02-2B-10



■ DC-G02-2B-10

