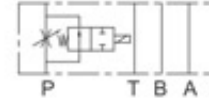


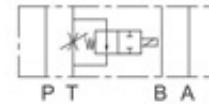
Solenoid Operated Throttle Valve



積層型電磁流量控制閥



MST-02*-P

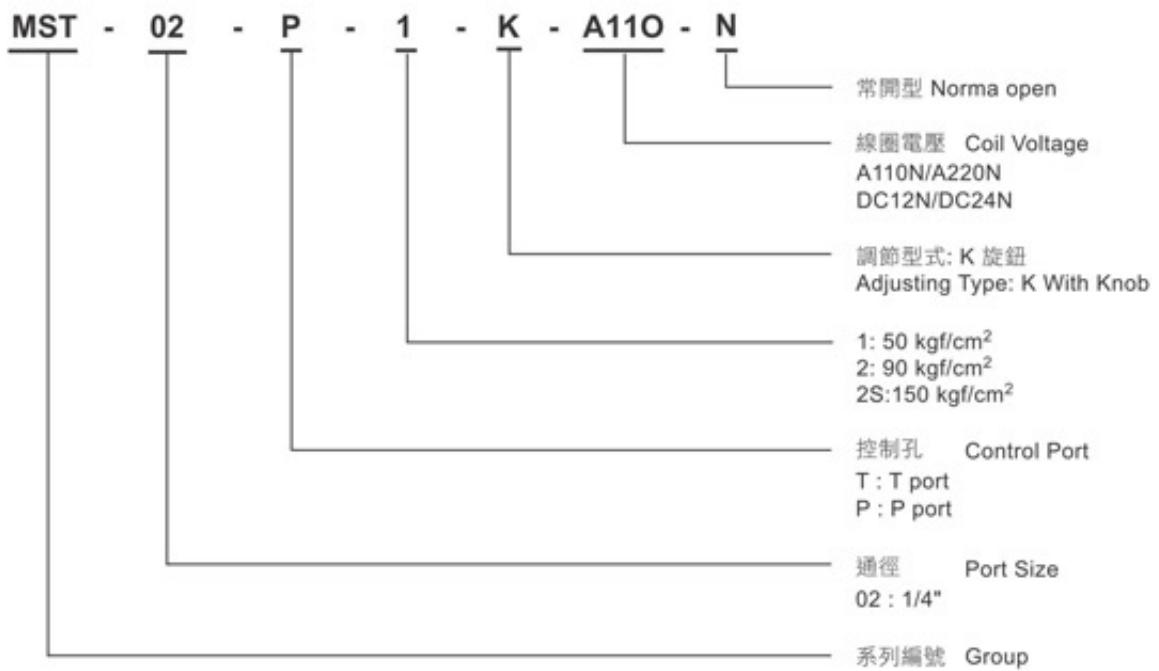


MST-02*-T



MST-02*-P

型號說明/HOW TO ORDER



規格說明/SPECIFICATIONS

型式 MODEL	壓力 PATED PRESSURE	流量 RATED FLOW
MST -02*	0~150 kgf/cm ²	20 l/min

Solenoid Operated Throttle Valve

積層型電磁流量控制閥



安裝尺寸/INSTALLATION DIMENSIONS

單位 UNIT : mm

■ MST-02-*

