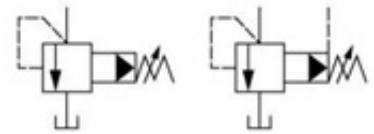


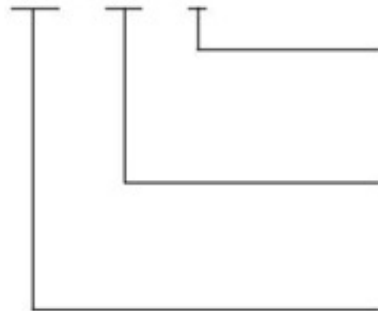
Pilot Operated Relief Valves

引導式溢流閥



型號說明/HOW TO ORDER

BG - 06 - 3



壓力調整範圍 Pressure Adjusting Range

1 : 7-70 kgf/cm²

2 : 35-140 kgf/cm²

3 : 70-250 kgf/cm²

通徑 Valve Size

03 : 3/8"

06 : 3/4"

10 : 1-1/4"

溢流閥

Relief Valve Mounting

G : 板式安裝

SUB-Plate Mounting

規格說明/SPECIFICATIONS

型式 MODEL	最高使用壓力 MAX.PRESSURE kgf/cm ²	壓力調節範圍 PRESSURE ADJ. RANGE kgf/cm ²	最大流量 RATED FLOW LPM	重量 WEIGHT (kg)
BG-03-※	250	1 : 7-70	100	5.4
BG-06-※		2 : 35-140	200	6.8
BG-10-※		3 : 70-250	400	10.5

附件/ ATTACHMENT

型式 MODEL	安全螺絲 SOC HOL CAP SCREW	
BG-03	M12 X 70L.....2pcs	M12 X 95L.....2pcs
BG-06	M16 X 60L.....2pcs	M16 X 80L.....2pcs
BG-10	M20 X 70L.....2pcs	M20 X 90L.....2pcs

Pilot Operated Relief Valves

引導式溢流閥

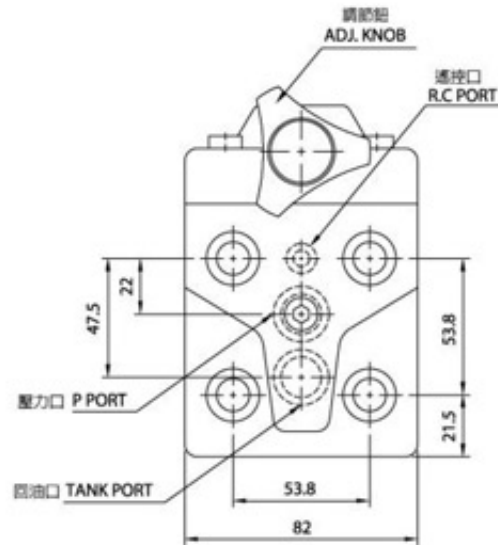
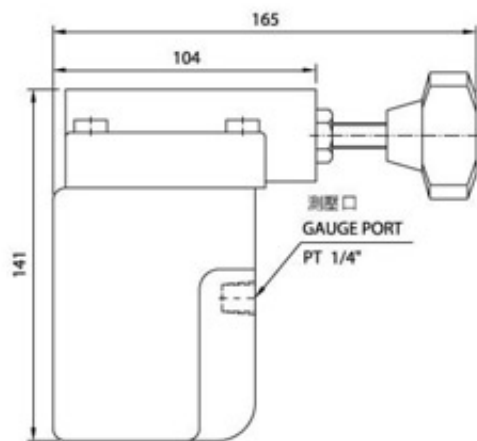


安裝尺寸/INSTALLATION DIMENSIONS

單位 UNIT : mm

■ BG-03

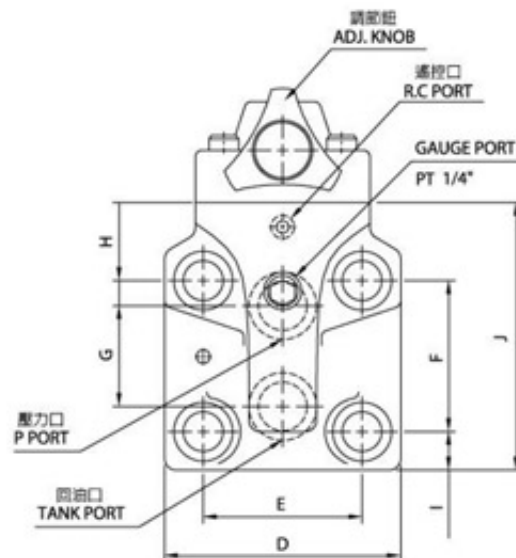
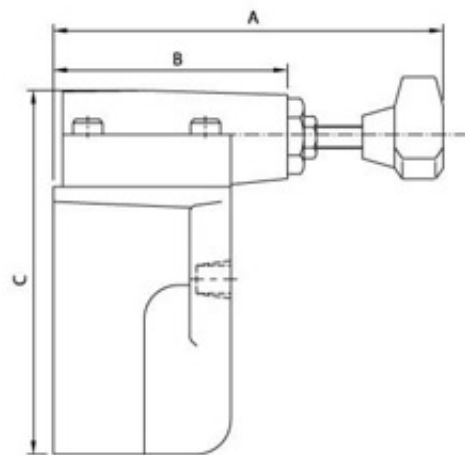
BG-03 : ISO 6264-AR-06-2-A



■ BG-06.10

BG-06 : ISO 6264-AS-08-2-A

BG-10 : ISO 6264-AT-10-2-A



型式 MODEL	A	B	C	D	E	F	G	H	I	J
BG-06	175	104	160	104	70	66.7	44.5	11	19.5	122
BG-10	184	120	195	125	82.6	88.9	63.6	12.7	18.5	150